



½" to 12"

Additional Sizes Available

High Temperature Perfect, Continuous Performance

CGS™ Flexi-Steel™ is leading the industry in current gasket high temperature technologies.

Flexi-Steel™ is a compound blend of 316L passivated stainless steel and PTFE.

Flexi-Steel™ is made into many types of gaskets, including Sanitary Clamp gasket styles.

This is the choice gasket material in a wide range of applications, including steam.

These gaskets have outstanding durability, and minimal thermal expansion with high temperatures.

Material - Flexi-Steel™,

Sizes - .5 inch, .75 inch, 1 inch, 1.5 inch, 2 inch, 2.5 inch, 3 inch, 4 inch, 5 inch, 6 inch, 8 inch, 10 inch, 12 inch

Applications

- Steam in Place (SIP)
- Clean in Place (CIP)
- WFI, Stills & Distillation
- Continuous Cycling
- Excellent Chemical Resistance
- Non-Stick Surface
- Minimal Thermal Expansion
- High Temperature Resistant
- Stay in Place Alignment (**SIPA™**)

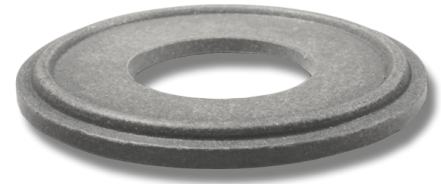
Available

- Sanitary Clamp Gaskets Type I, II & III
- Sizes ½" to 12"
- Non-Magnetic or **MDXD™** Metal Detectable Magnetic
- Bevel Seat • I-Line • Q-Line • John Perry • Envelope Gaskets
- Screen Gaskets • Orifice Plates • Perforated Plates • Steam Traps
- FDA, USP Class VI Compliant



Strong like steel, but flexible like PTFE Fluoropolymer.

CGS™ Flexi-Steel™ gaskets have outstanding documented usage with perfect continuous performance. The steel strength makes it the durable answer in numerous applications.



Flexi-Steel™ gaskets meet FDA, USP Class VI Criteria, FDA Title 21 CFR 177 .2600, FDA Title 21 CFR 177 .1550, Current Good Manufacturing Practices (CGMP), ASME, Animal Derived Ingredient Free (ADI), FDA Compliant Mold release. BUNA-N is FDA Only.

Flexi-Steel™ – This is our own compound blend of PTFE (TFM) and 316L Stainless Steel. This is one of our best materials for steam with an outstanding leak-proof performance. The material is one of our most durable. The material has excellent chemical resistance. This is ideal for sanitary pipe connections in both extreme cold and high heat conditions.

It has superior creep resistance and is excellent with expansion and contraction stability (minimal thermal expansion).

This has a non-stick surface. The chromium nickel content offers very good resistance to rouging.

The color is gray and is compliant with the FDA and USP Class VI criteria.

Material	Color	Temperature	Compliance	Animal Derived	Durometer Hardness
Flexi-Steel™	Gray	-320F to 550F	FDA USP. Class VI.	ADIF	D68